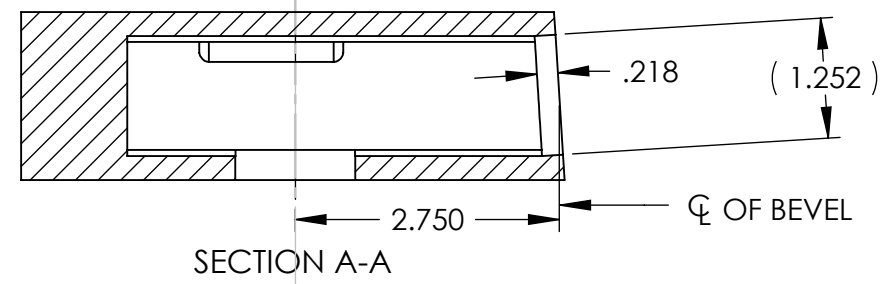
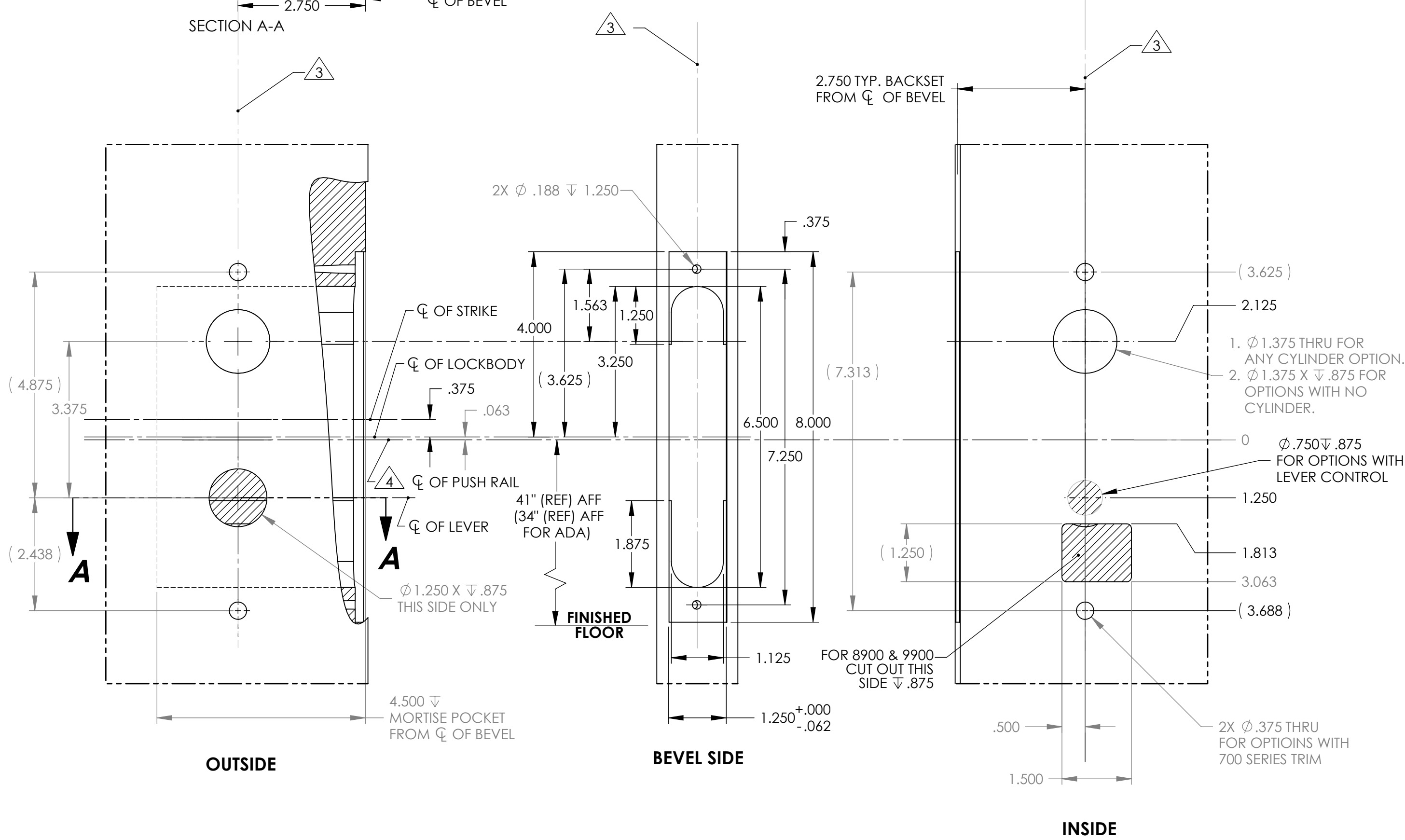


# WOOD DOOR

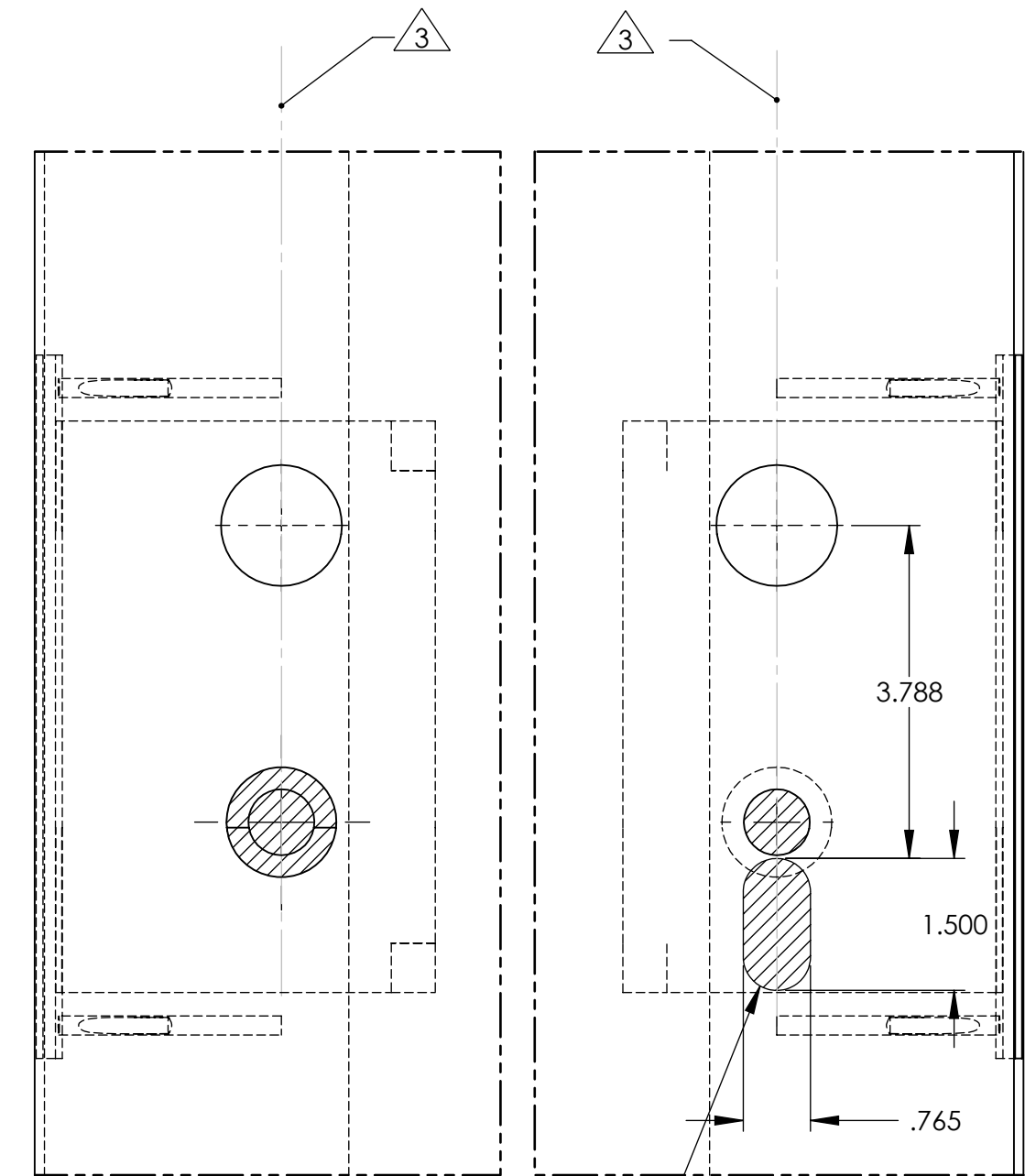


SECTION A-A



L.H.R.B. DOOR SHOWN

8900 & 9900 PREP



OUTSIDE

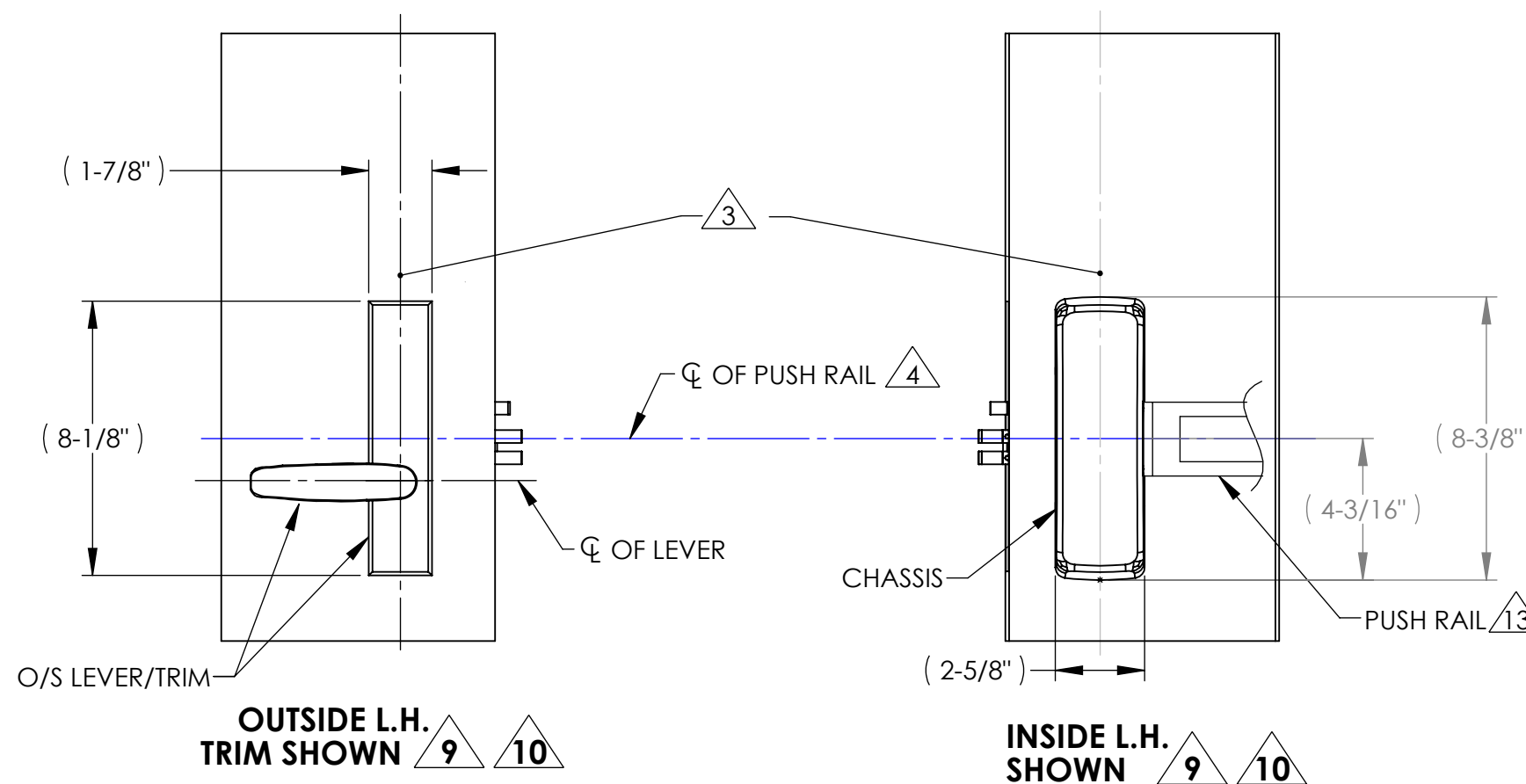
INSIDE

FOR 8300 NARROW STILE CUT OUT THIS SIDE  $\nabla$  .875

R.H.R.B. DOOR SHOWN

8300 PREP

- NOTES:
- DRAWING IS NOT TO SCALE.
  - REFERENCE STRIKE TEMPLATE FOR DETAILS TO PREPARE FRAME.
  - VERTICAL CENTERLINE IS REFERENCED FROM THE CENTERLINE OF THE BEVEL. (INDUSTRY STANDARD BEVEL IS 1/8 INCH IN 2 INCHES.)
  - CONSULT THE AUTHORITY HAVING JURISDICTION (AHJ) TO VERIFY THE RECOMMENDED MOUNTING HEIGHT ABOVE THE FINISHED FLOOR (AFF). LIMITATIONS IN THE DOOR CONSTRUCTION PROCESS MAY REQUIRE SOME HOLES TO BE FIELD-LOCATED USING THE PHYSICAL PART AS A TEMPLATE.
  - STANDARD TOLERANCE OF  $\pm .015$  APPLIES TO ALL DOOR PREPARATION REQUIREMENTS, UNLESS OTHERWISE SPECIFIED.
  - DOOR REINFORCEMENT IS RECOMMENDED TO IMPROVE (SURFACE MOUNTED) FASTENER HOLDING POWER AND CRUSH RESISTANCE (WHEN THRU-BOLTING IS EMPLOYED). CONSTRUCTION TECHNIQUES SHOULD REFLECT INDUSTRY BEST PRACTICES (I.E. WDMA, SDI) AND AUTHORIZED METHODS WHERE LABEL SERVICE (I.E. UL, W-H) IS IN EFFECT.
  - CAREFULLY NOTE WHICH FEATURES ARE OPTIONAL, (WHETHER THE FEATURE APPLIES TO BOTH SIDES OF THE DOOR AND/OR IF A DEPTH APPLIES.)
  - MAXIMUM PRODUCT DIMENSIONS ARE SHOWN FOR THE PURPOSE OF VERIFYING FITMENT WITH DOOR FRAME STOPS, DOOR STILE SIZE & LIGHT/LOUVER KITS.
  - IF OPTIONAL LEVERS OR ROSES ARE USED REFERENCE THE RELATED PRODUCT DIMENSIONS TO VERIFY THE FITMENT REQUIREMENTS.
  - SEE TEMPLATE 4290 FOR EXIT DEVICE PREP
  - SEE TEMPLATE 4277 FOR EXIT TRIM PREP



OUTSIDE L.H. TRIM SHOWN 9 10

INSIDE L.H. SHOWN 9 10

BACKSET DEFINITION	DOOR HANDING
BACKSET	L.H. INSIDE R.H.
TOP OF DOOR VERTICAL $\nabla$	OUTSIDE
$\nabla$ OF BEVEL	INSIDE
	L.H.R.B. OUTSIDE R.H.R.B.

**SARGENT ASSA ABLOY** Sargent Manufacturing Company  
100 Sargent Drive New Haven, CT 06511

DOOR MANUFACTURERS TEMPLATE: RELEASE DATE  
WOOD DOOR JAN 23, 2012  
8300, 8900, & 9900 EXIT DEVICE TEMPLATE NO.  
SHEET 1 OF 1 4709 A