

# 1701 Series Surface Overhead Holders & Stops Installation Instructions

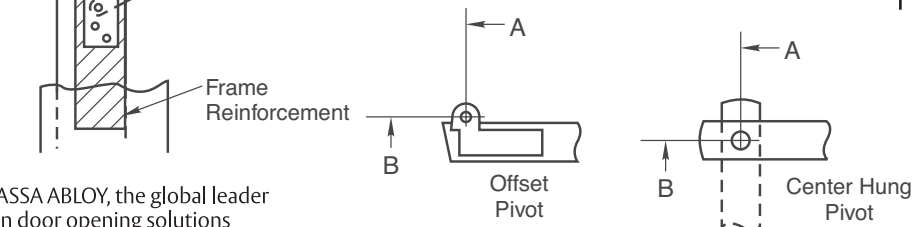
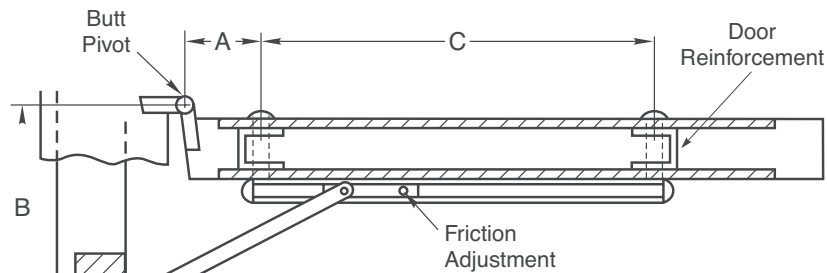
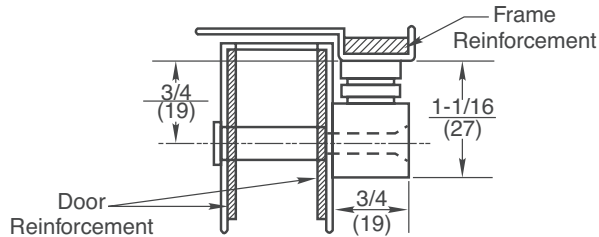
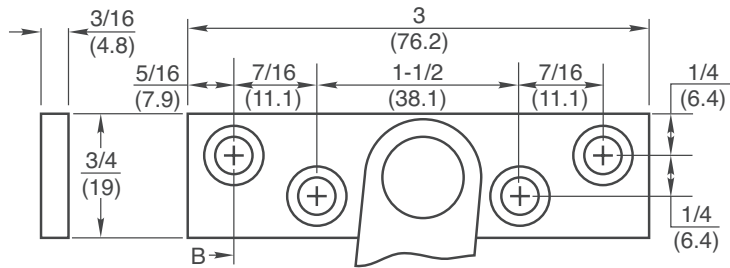
Non-handed. Left had shown, right hand opposite.

FOR INSTALLATION ASSISTANCE CALL SARGENT AT 1-800-727-5477 / www.sargentlock.com

**SARGENT®**

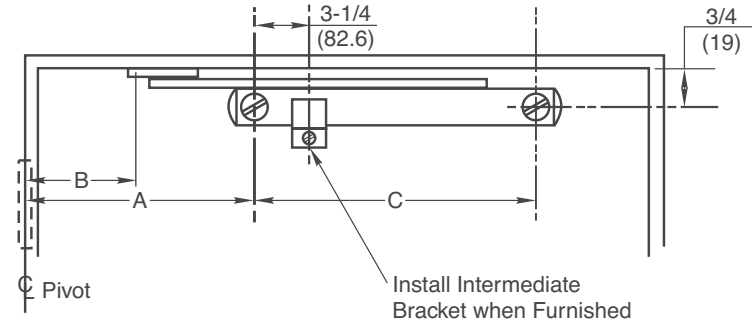
**ASSA ABLOY**

1. Select proper dimensions from chart on back side of page.
2. Locate "A" and "B" dimensions on door and frame.
3. Install jamb bracket on stop strip as shown
4. Position channel on door with spring end located towards pivot. Drill 5/16" (7.9) dia mortise nut hole, "A" dimension, 3/4" (19) down from stop as shown.



ASSA ABLOY, the global leader in door opening solutions

5. Install channel on door with "A" dimension sex bolt. Locate "C" dimension sex bolt hole making sure that channel is horizontal and parallel with stop strip. Drill 5/16" (7.9) dia sex bolt hole and finish installing holder.



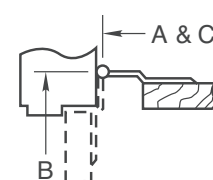
## Notes:

- All hollow metal frames should be properly reinforced with 3/16" (4.8) min. thickness x 12" (304.8) min. length reinforcement plates.
- All hollow metal doors should be properly reinforced.
- All drilling and tapping to be done in the field.
- Suggest mounting door stop or holder first and then other hardware to clear. Contact factory if interference results with other hardware.
- Jamb bracket to be on same centerline as channel.
- Intermediate bracket #12 x 3/4" FSMS.
- All dimensions are given in inches (mm).

## Caution:

Note location of swing clear hinge centerline to determine "A" and "B" dimensions.

Screw Details	
Jamb	Door
#12 x 1-1/2" FHWS or #12-24 x 1/2" FHMS (4 Places)	#12-24 x 1-1/2" FHWS and 5/16" Dia. Sex Bolt (2 Places)



Copyright © 2011, Sargent Manufacturing Company, an ASSA ABLOY Group company. All rights reserved. Reproduction in whole or in part without the express written permission of Sargent Manufacturing Company is prohibited.

A8099A 3/1/11

# 1701 Series

## Surface Overhead Holders & Stops Installation Instructions

FOR INSTALLATION ASSISTANCE CALL SARGENT AT 1-800-727-5477 / www.sargentlock.com

**SARGENT®**

**ASSA ABLOY**

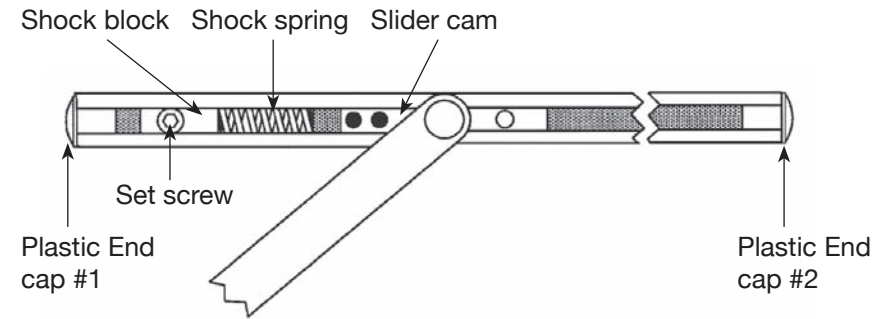
### 1701 Series Surface Mounted Door Stops and Holders

1. See other side for installation instructions.
2. Select proper dimensions noted below.
3. Add 5/8" to "A" dimension for dead stop.
4. All dimensions given in inches.

	Device Number	Door Opening	A	B	C
1-3/4 – 2-1/4 Butts & 3/4 Offset Pivot	1701	*18 – 24	1-3/16	3-9/16	14-13/16
	1702	24-1/16 – 30	3-3/4	4-3/16	16
	1703	30-1/16 – 36	6-9/16	5-3/8	17-3/4
	1704	36-1/16 – 42	9-13/16	7-1/16	20-3/16
	1705	42-1/16 – 48	13-3/4	8-5/16	22
Center Hung	1701	21 – 26-1/2	1-5/8	4	14-13/16
	1702	26-9/16 – 32	4-7/16	4-7/8	16
	1703	32-1/16 – 38	7-3/16	6	17-3/4
	1704	38-1/16 – 45	10-3/8	7-5/8	20-3/16
	1705	45-1/16 – 48	14-5/16	8-7/8	22

\*Butt mounting only. Reversible, non-handed.

**When Using Center Hung Pivots, Check Pivot Manufacturer's Compatibility Prior to Specifying**



### To Select Degree of Stop

1. With a 3/16 hex key wrench, loosen the set screw in the shock block.
2. Open door to desired degree of opening.
3. Slide shock block and spring until the spring touches slider cam.
4. Tighten set screw.
5. Verify door opening position re-adjust, as needed.