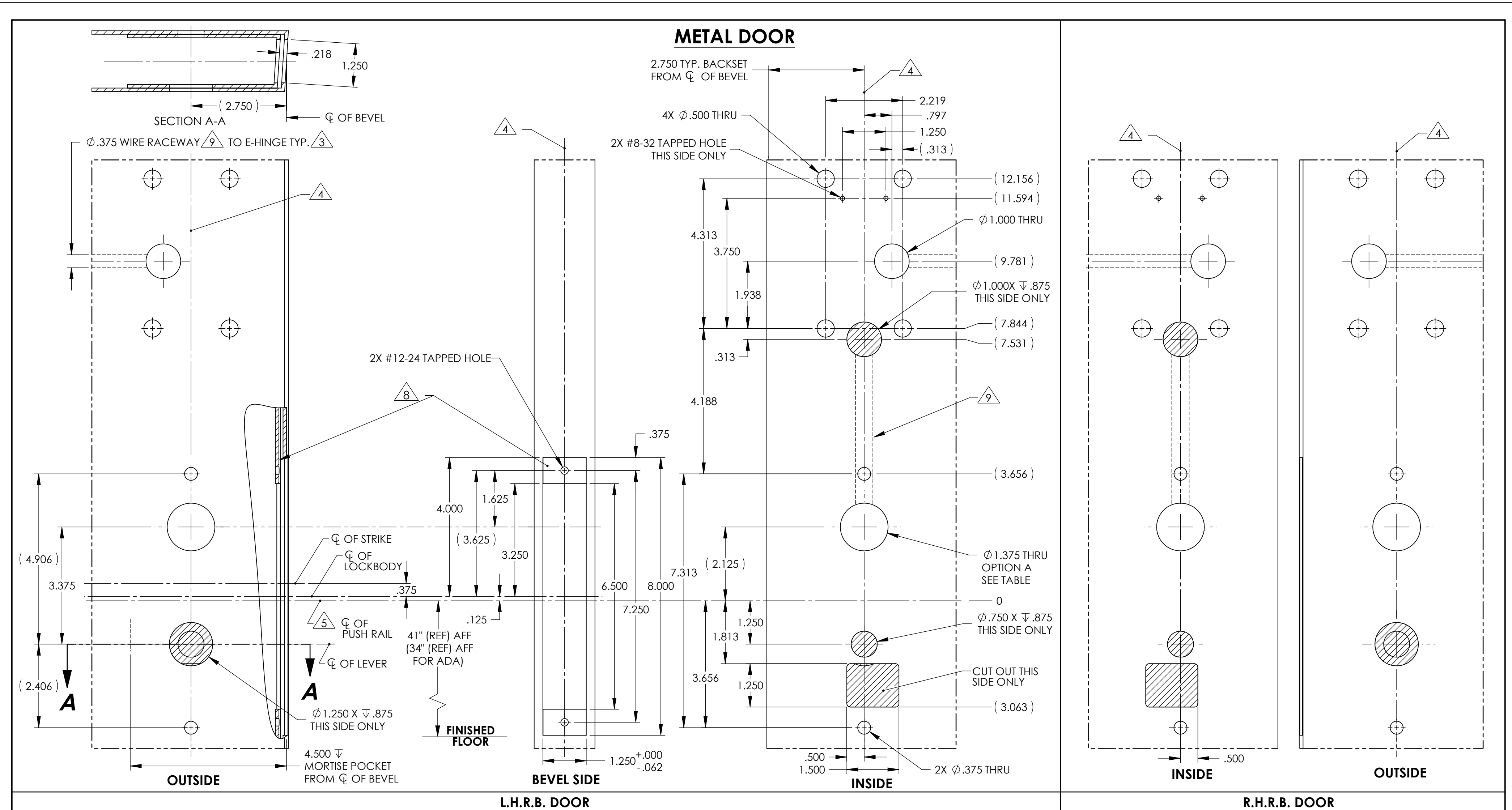
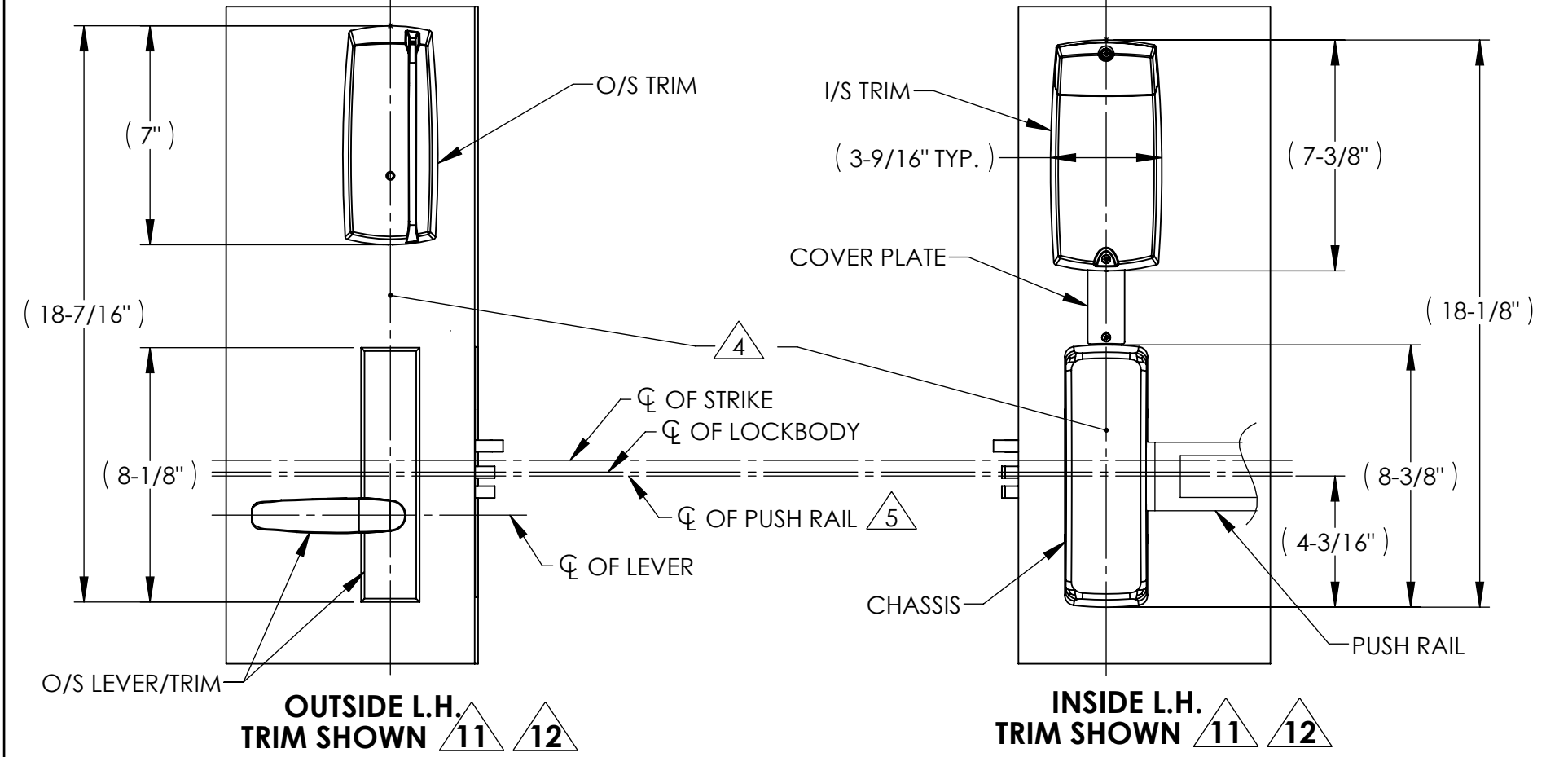


REVISION HISTORY				
ZONE	REV	DESCRIPTION	NAME/DATE	APPD/DATE
	A	ORIGINAL RELEASE PER PCP #09-0105	JDC 3/24/09	---
4. A8 5. A1	B	PER PCP #10-0301 1. RE-DESIGNED TEMPLATE & RE-DIMENSIONED FEATURES. 2. REMOVED LARGE SQUARE CUTOUT. 3. ADDED THRU-HOLES FOR TRIM. 4. CHANGED ALL NOTES TO NEW STD. 5. ADDED (P1 - W/O DPS) TO TITLE. 6. CONVERTED FROM FRACTIONAL DIMENSIONS (+/- 1/64).	MAC 6/11/10 JW 10/4/10	



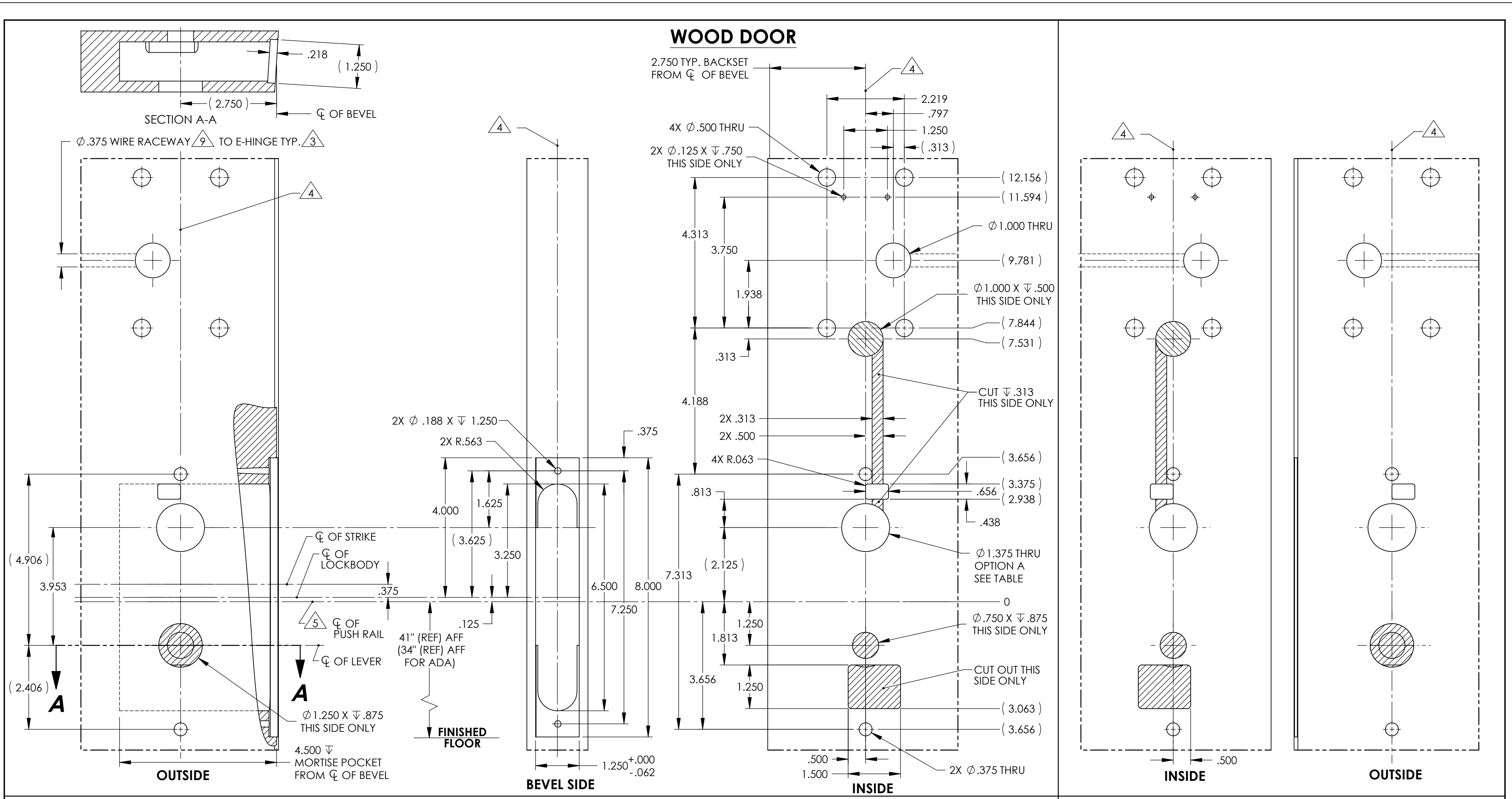
- NOTES:
- DRAWING IS NOT TO SCALE.
 - REFERENCE STRIKE TEMPLATE FOR DETAILS TO PREPARE FRAME.
 - FOR ELECTROLYNX APPLICATIONS, REFER TO MCKINNEY TRANSFER DEVICE CATALOG.
 - VERTICAL CENTERLINE IS REFERENCED FROM THE CENTERLINE OF THE BEVEL. (INDUSTRY STANDARD BEVEL IS 1/8 INCH IN 2 INCHES.)
 - CONSULT THE AUTHORITY HAVING JURISDICTION (A.H.J.) TO VERIFY THE RECOMMENDED MOUNTING HEIGHT ABOVE THE FINISHED FLOOR (AFF). LIMITATIONS IN THE DOOR CONSTRUCTION PROCESS MAY REQUIRE SOME HOLES TO BE FIELD-LOCATED USING THE PHYSICAL PART AS A TEMPLATE.
 - STANDARD TOLERANCE OF \pm .015 APPLIES TO ALL DOOR PREPARATION REQUIREMENTS, UNLESS OTHERWISE SPECIFIED.
 - DOOR REINFORCEMENT IS RECOMMENDED TO IMPROVE (SURFACE MOUNTED) FASTENER HOLDING POWER AND CRUSH RESISTANCE (WHEN THRU-BOLTING IS EMPLOYED). CONSTRUCTION TECHNIQUES SHOULD REFLECT INDUSTRY BEST PRACTICES (I.E. WDMA, SDI) AND AUTHORIZED METHODS WHERE LABEL SERVICE (I.E. UL, W-H) IS IN EFFECT.
 - WIRE RACEWAY AREAS SHALL BE FREE OF OBSTRUCTIONS & SHARP EDGES TO PROTECT WIRES FROM CUTS & ABRASIONS.
 - CAREFULLY NOTE WHICH FEATURES ARE OPTIONAL, (WHETHER THE FEATURE APPLIES TO BOTH SIDES OF THE DOOR AND/OR IF A DEPTH APPLIES.)
 - MAXIMUM PRODUCT DIMENSIONS ARE SHOWN FOR THE PURPOSE OF VERIFYING FITMENT WITH DOOR FRAME STOPS, DOOR STILE SIZE & LIGHT/LOUVER KITS.
 - IF OPTIONAL LEVERS OR ROSES ARE USED REFERENCE THE RELATED PRODUCT DIMENSIONS TO VERIFY THE FITMENT REQUIREMENTS.



AUTHORIZED PREFIXES		
P1		
OPTIONS TABLE		
OPTION	DESCRIPTION	USED FOR FUNCTIONS
8977		8978
A	CYLINDER	X N/A
BACKSET DEFINITION		DOOR HANDING
BACKSET		L.H. INSIDE R.H.
TOP OF DOOR VERTICAL ϕ OF BEVEL		OUTSIDE
		INSIDE
		L.H.R.B. OUTSIDE R.H.R.B.
SARGENT Sargent Manufacturing Company 100 Sargent Drive New Haven, CT 06511 ASSA ABLOY		
DOOR MANUFACTURERS TEMPLATE: P1 PASSPORT 1000 TRIM (W/O DPS)		RELEASE DATE: OCT 22, 2010
METAL DOOR		TEMPLATE NO. 4660 B
8900 EXIT DEVICE		SHEET 1 OF 2

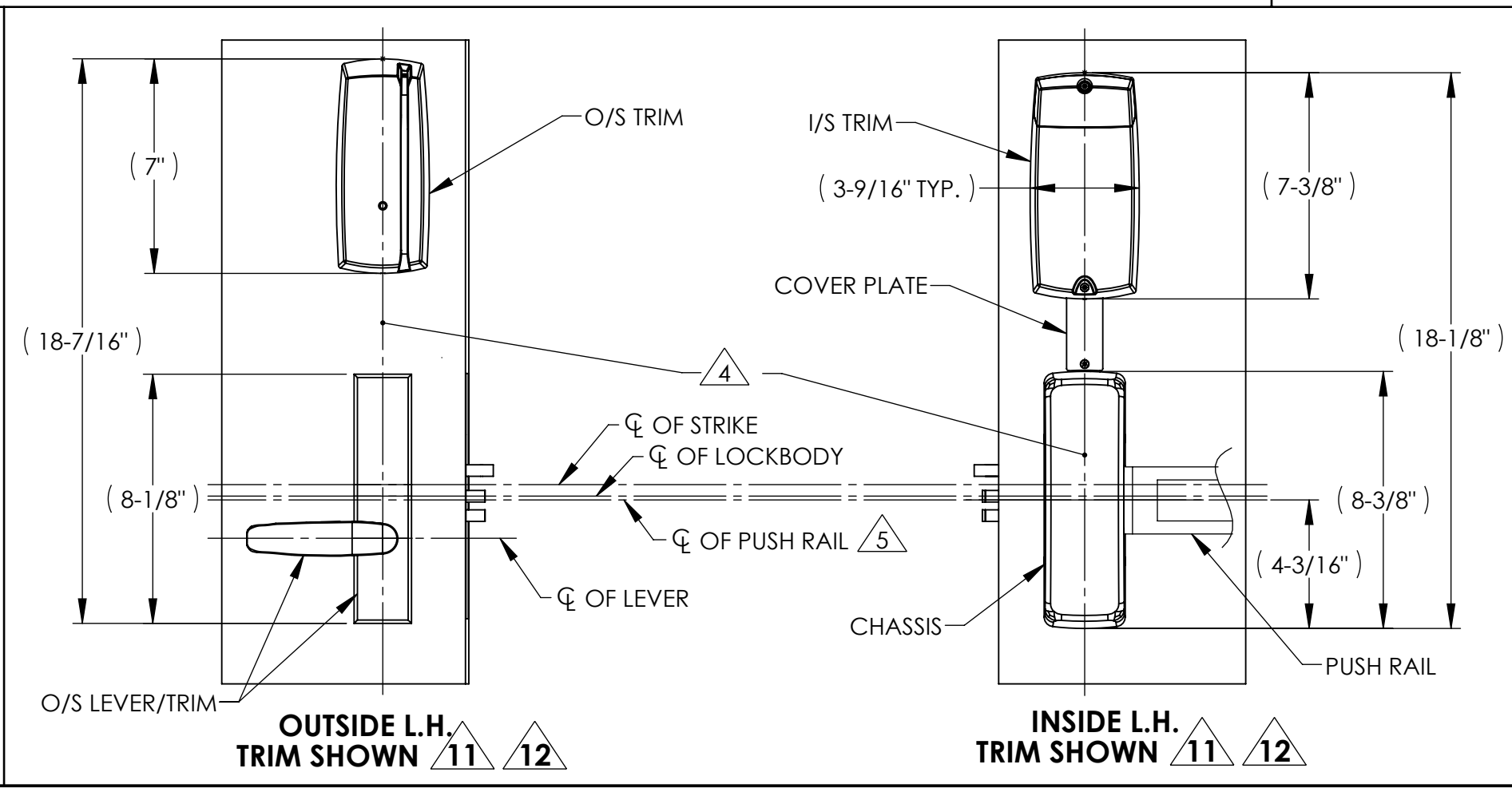
INTERPRET DRAWING PER ANSI Y14.5M-1994		DRAWN BY/DATE		SARGENT® SARGENT Manufacturing Company	
UNLESS OTHERWISE SPECIFIED ALL DIMENSIONS ARE IN INCHES.		JDC	3/24/09	100 Sargent Drive New Haven, CT 06511	
TOLERANCE .XX ±.01		CHECKED BY/DATE	5/13/09	ART. PASSPORT 1000 EXIT DEVICE (8900)	
ANGLE ±1°		MFG ENG/DATE	5/14/09	TITLE: DOOR MANUFACTURERS TEMPLATE (P1 W/O DPS)	
FRACTION ±1/64		PNL APPROVAL/DATE	5/14/09	SIZE DWG No. 4660	
CONFIDENTIAL		PNL APPROVAL/DATE	6/22/09	REV B	
THIS DOCUMENT IS THE CONFIDENTIAL PROPERTY OF SARGENT MANUFACTURING AND IS NOT TO BE REPRODUCED, USED OR DISCLOSED BY ANYONE WITHOUT THE EXPRESS WRITTEN PERMISSION OF THE SARGENT MANUFACTURING COMPANY.		PROD CTRL/PNL REL	JM	SCALE: 1:2 SHEET: 1 of 2	

REVISION HISTORY				
ZONE	REV	DESCRIPTION	NAME/DATE	APPD/DATE
-	-	SEE SHEET 1	-	-



TRIM BORDER LINE

- NOTES:
- DRAWING IS NOT TO SCALE.
 - REFERENCE STRIKE TEMPLATE FOR DETAILS TO PREPARE FRAME.
 - FOR ELECTROLYNX APPLICATIONS, REFER TO MCKINNEY TRANSFER DEVICE CATALOG.
 - VERTICAL CENTERLINE IS REFERENCED FROM THE CENTERLINE OF THE BEVEL. (INDUSTRY STANDARD BEVEL IS 1/8 INCH IN 2 INCHES.)
 - CONSULT THE AUTHORITY HAVING JURISDICTION (A.H.J.) TO VERIFY THE RECOMMENDED MOUNTING HEIGHT ABOVE THE FINISHED FLOOR (AFF). LIMITATIONS IN THE DOOR CONSTRUCTION PROCESS MAY REQUIRE SOME HOLES TO BE FIELD-LOCATED USING THE PHYSICAL PART AS A TEMPLATE.
 - STANDARD TOLERANCE OF \pm .015 APPLIES TO ALL DOOR PREPARATION REQUIREMENTS, UNLESS OTHERWISE SPECIFIED.
 - DOOR REINFORCEMENT IS RECOMMENDED TO IMPROVE (SURFACE MOUNTED) FASTENER HOLDING POWER AND CRUSH RESISTANCE (WHEN THRU-BOLTING IS EMPLOYED). CONSTRUCTION TECHNIQUES SHOULD REFLECT INDUSTRY BEST PRACTICES (I.E. WDMA, SDI) AND AUTHORIZED METHODS WHERE LABEL SERVICE (I.E. UL, W-H) IS IN EFFECT.
 - WIRE RACEWAY AREAS SHALL BE FREE OF OBSTRUCTIONS & SHARP EDGES TO PROTECT WIRES FROM CUTS & ABRASIONS.
 - CAREFULLY NOTE WHICH FEATURES ARE OPTIONAL, (WHETHER THE FEATURE APPLIES TO BOTH SIDES OF THE DOOR AND/OR IF A DEPTH APPLIES.)
 - MAXIMUM PRODUCT DIMENSIONS ARE SHOWN FOR THE PURPOSE OF VERIFYING FITMENT WITH DOOR FRAME STOPS, DOOR STILE SIZE & LIGHT/LOUVER KITS.
 - IF OPTIONAL LEVERS OR ROSES ARE USED REFERENCE THE RELATED PRODUCT DIMENSIONS TO VERIFY THE FITMENT REQUIREMENTS.



AUTHORIZED PREFIXES

P1

OPTIONS TABLE

OPTION	DESCRIPTION	USED FOR FUNCTIONS
8977	8978	X
A	CYLINDER	N/A

BACKSET DEFINITION

BACKSET

TOP OF DOOR

ϕ OF VERTICAL ϕ

ϕ OF BEVEL

DOOR HANDING

DOOR HANDING	DOOR HANDING	
	L.H.	R.H.
INSIDE	INSIDE	R.H.
OUTSIDE	OUTSIDE	L.H.

SARGENT Sargent Manufacturing Company
100 Sargent Drive New Haven, CT 06511

ASSA ABLOY

DOOR MANUFACTURERS TEMPLATE: P1 PASSPORT 1000 TRIM (W/OUT DPS)

WOOD DOOR

8900 EXIT DEVICE

RELEASE DATE: OCT 22, 2010

TEMPLATE NO. 4660 B

SHEET 2 OF 2

INTERPRET DRAWING PER ANSI Y14.5M-1994	DRAWN BY/DATE JDC 3/24/09	SARGENT SARGENT Manufacturing Company 100 Sargent Drive New Haven, CT 06511 ART. PASSPORT 1000 EXIT DEVICE (8900) TITLE: DOOR MANUFACTURERS TEMPLATE (P1 W/OUT DPS) DWG No. 4660 SCALE: 1:2 SHEET: 2 of 2
UNLESS OTHERWISE SPECIFIED ALL DIMENSIONS ARE IN INCHES.	CHECKED BY/DATE RMC 5/13/09	
TOLERANCE .XX \pm .01 ANGLE \pm 1° FRACTION \pm 1/64	MFG ENG/DATE RMC 5/14/09 PNL APPROVAL/DATE JW 5/14/09 PNL APPROVAL/DATE - - PROD CTRL/PNL REL JM 6/22/09	

Form Rev. 30Jan2004