

P8 SERIES PARTS LIST

PARTS LIST

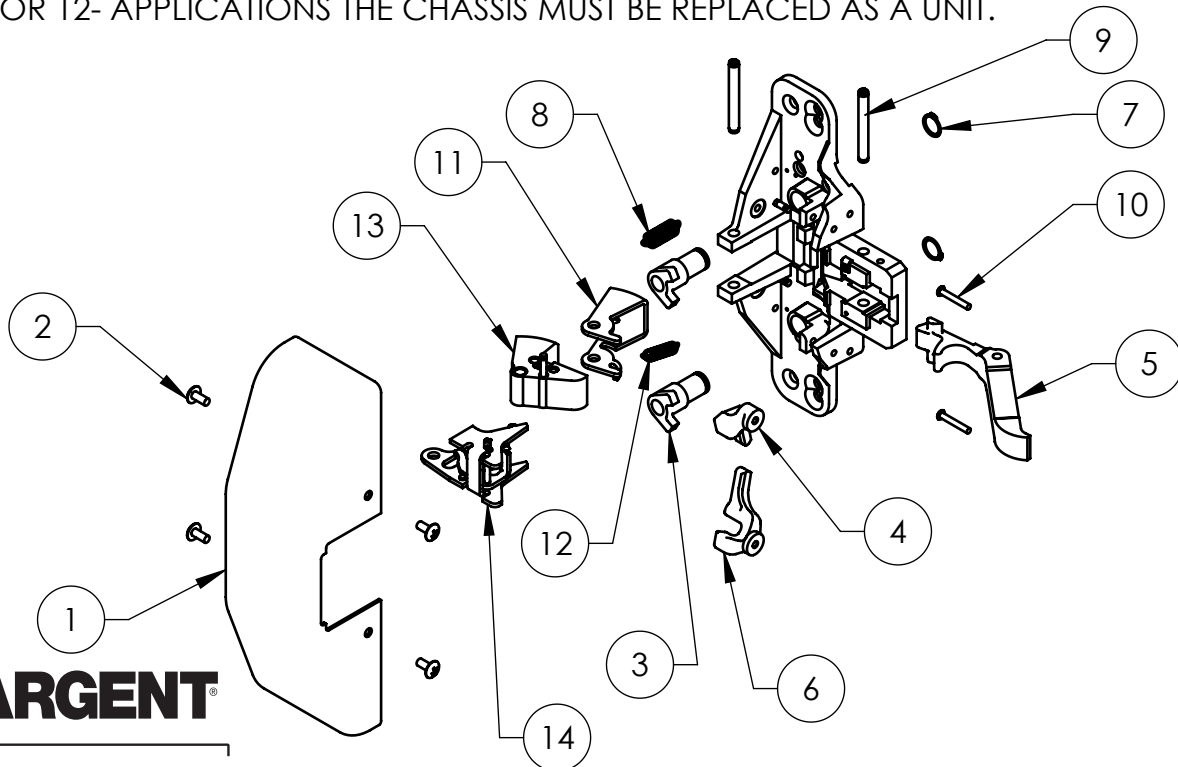
PAGE No. P8.2
REV. A

ITEM NO.	QTY.	PART NUMBER	DESCRIPTION
1*	1	P8-0006	GUARDED RIM COVER
2	4	01-1141	CR-THMS 8-32 X .375
3	2	98-0018	OUTSIDE CYLINDER HUB
4	1	68-1367	LIFT LEVER
5	1	68-1353	LIFT ARM (guarded)
6	1	68-1366	LIFT LEVER
7	2	01-0005	RETAINING RING, Truarc 5100-43
8	1	98-0028	LATCH BOLT SPRING
9	2	01-4512	SPIROL PIN
10	2	98-0011	LATCH BOLT LEVER PIVOT PIN
11	1	68-1352	GUIDE
12	1	68-1394	EXTENSION SPRING
13	1	P8-2006	LATCH BOLT ASSEMBLY
14	1	68-4417	GUARD BRACKET ASSEMBLY
	1	52-0310	CABLE CLAMP
	1	01-1482	(#2-56 PH PN HD) MACHINE SCREW

PREFIX	CHASSIS LESS COVER
GL	P8-2002
53	P8-2004
12-GL ±	P8-2003
12-53 ±	P8-2005

* SPECIFY FINISH

± FOR 12- APPLICATIONS THE CHASSIS MUST BE REPLACED AS A UNIT.



SARGENT

ASSA ABLOY

ASSA ABLOY, the global leader
in door opening solutions