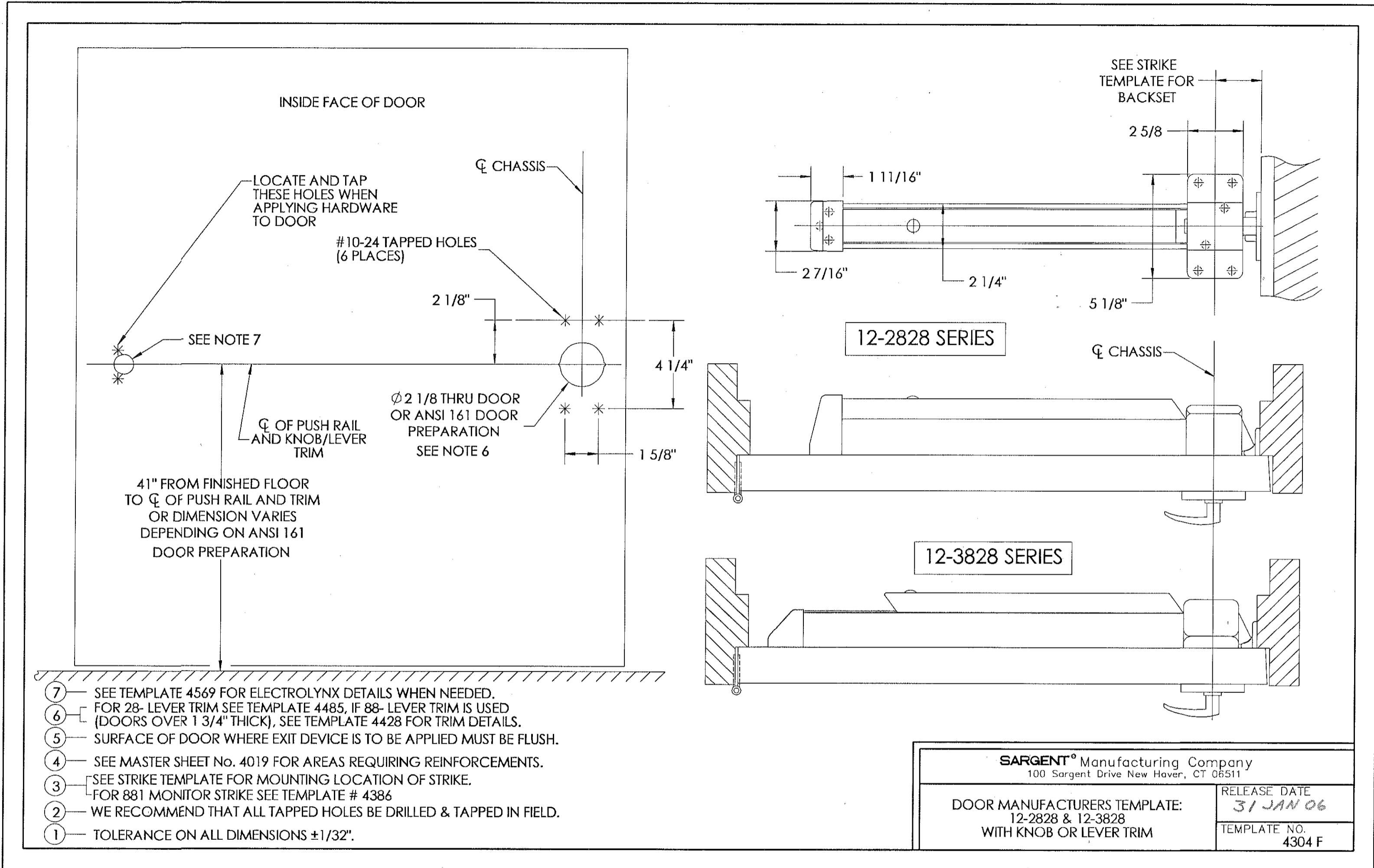


| REVISION HISTORY | | | | |
|------------------|------|---|-----------|-------------|
| ZONE | REV. | DESCRIPTION | NAME/DATE | APPD/DATE |
| | F | REDRAWN WITH CHANGE PER PCP 04-382 ADDED NOTES 6 & 7 | 8/12/2004 | CPA 1/30/06 |



- ⑦ — SEE TEMPLATE 4569 FOR ELECTROLYNX DETAILS WHEN NEEDED.
- ⑥ — FOR 28- LEVER TRIM SEE TEMPLATE 4485, IF 88- LEVER TRIM IS USED (DOORS OVER 1 3/4" THICK), SEE TEMPLATE 4428 FOR TRIM DETAILS.
- ⑤ — SURFACE OF DOOR WHERE EXIT DEVICE IS TO BE APPLIED MUST BE FLUSH.
- ④ — SEE MASTER SHEET No. 4019 FOR AREAS REQUIRING REINFORCEMENTS.
- ③ — SEE STRIKE TEMPLATE FOR MOUNTING LOCATION OF STRIKE.
FOR 881 MONITOR STRIKE SEE TEMPLATE # 4386
- ② — WE RECOMMEND THAT ALL TAPPED HOLES BE DRILLED & TAPPED IN FIELD.
- ① — TOLERANCE ON ALL DIMENSIONS ±1/32".

SARGENT® Manufacturing Company
100 Sargent Drive New Haven, CT 06511

| | |
|--|----------------------------------|
| DOOR MANUFACTURERS TEMPLATE: 12-2828 & 12-3828 WITH KNOB OR LEVER TRIM | RELEASE DATE 31 JAN 06 |
| | TEMPLATE NO. 4304 F |

| | | | |
|--|------------------------|---|---|
| INTERPRET DRAWING PER ANSI Y14.5M -1994 | | DRAWN BY/DATE <i>CPA</i> 1/23/06 | SARGENT ® SARGENT Manufacturing Company 100 Sargent Drive New Haven, CT 06511 |
| UNLESS OTHERWISE SPECIFIED ALL DIMENSION ARE IN INCHES. | | CHECKED BY/DATE <i>L.M.</i> 1-31-06 | |
| TOLERANCE | .XX ±.01 .XXX ±.005 | MFG ENG/DATE | ART. EXIT DEVICE TEMPLATE |
| ANGLE | ±1° | FNL APPROVAL/DATE <i>CPA</i> 1/30/06 | TITLE: DOOR MANUFACTURERS TEMPLATE: 12-2828 & 12-3828 WITH KNOB OR LEVER TRIM |
| FRACTION | ±1/64 | FNL APPROVAL/DATE | SIZE DWG No. 4304 |
| CONFIDENTIAL <small>THIS DOCUMENT IS THE CONFIDENTIAL PROPERTY OF SARGENT MANUFACTURING AND IS NOT TO BE REPRODUCED, USED OR DISCLOSED BY ANYONE WITHOUT THE EXPRESS WRITTEN PERMISSION OF THE SARGENT MANUFACTURING COMPANY.</small> | | PROD CTRL/FNL REL <i>CPA</i> 1/30/06 | REV F |
| | | SCALE: 1:1 | SHEET: 1 of 1 |

DWG No. 4304