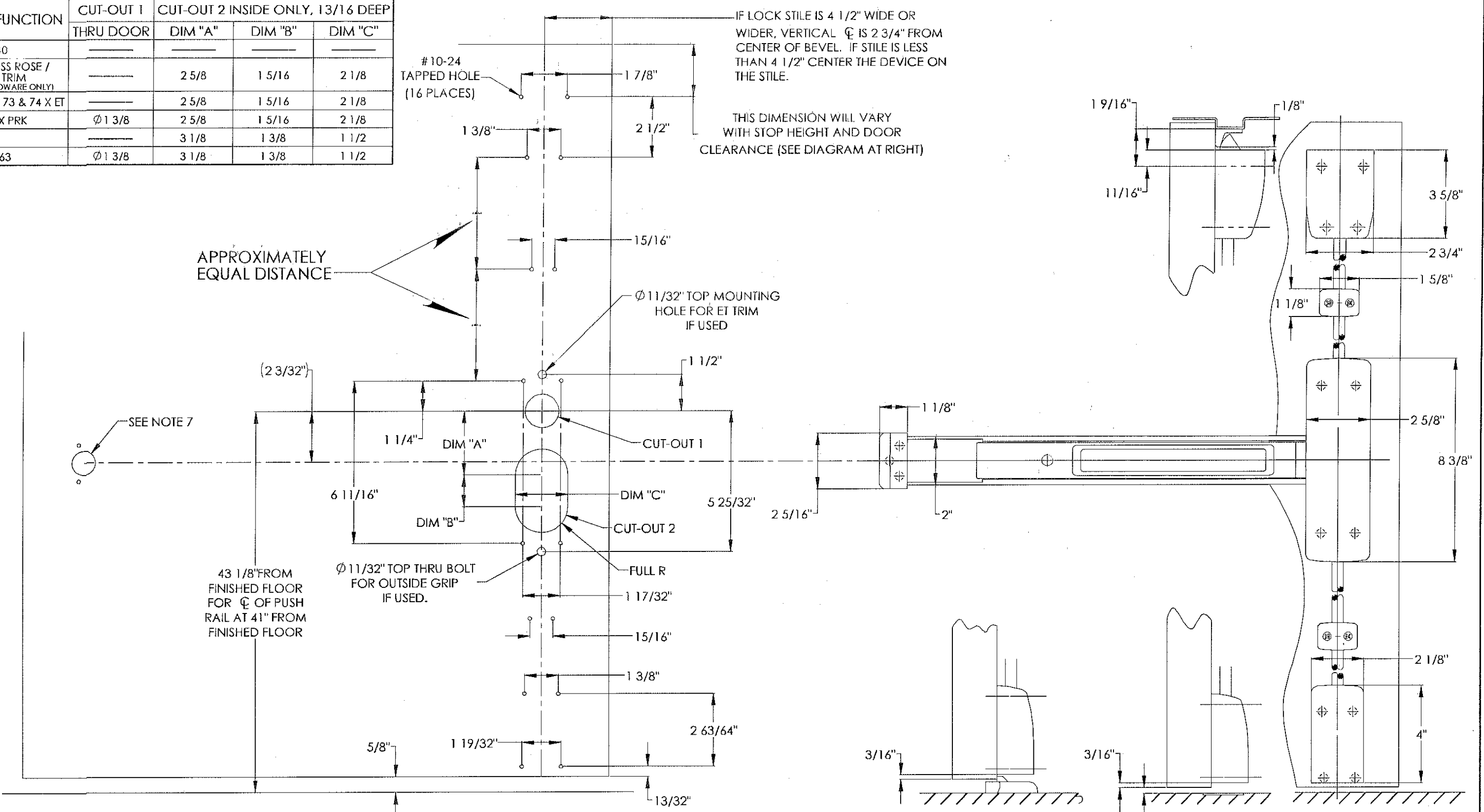


REVISION HISTORY				
ZONE	REV	DESCRIPTION	NAME/DATE	APPD/DATE
	H	REDRAWN WITH CHANGE PER PCP 04-382 ADD NOTES 7 AND 8	1/18/2005	<i>Ces</i> 1/30/06

EXIT DEVICE FUNCTION	CUT-OUT 1 THRU DOOR	CUT-OUT 2 INSIDE ONLY, 1 3/16 DEEP		
		DIM "A"	DIM "B"	DIM "C"
10 & 40				
10 X SCREWLESS ROSE / INACTIVE TRIM (FOR EXISTING HARDWARE ONLY)		2 5/8	1 5/16	2 1/8
06, 13, 15, 43, 46, 73 & 74 X ET		2 5/8	1 5/16	2 1/8
06 OR 13 X PRK	Ø 1 3/8	2 5/8	1 5/16	2 1/8
28		3 1/8	1 3/8	1 1/2
62 OR 63	Ø 1 3/8	3 1/8	1 3/8	1 1/2



- NOTES:
1. TOLERANCE ON ALL DIMENSIONS ±1/64.
  2. WE RECOMMEND ALL TAPPED HOLES BE DRILLED AND TAPPED IN FIELD.
  3. SEE STRIKE TEMPLATE No. 4413 FOR TOP AND BOTTOM STRIKES.
  4. SEE MASTER SHEET No. 4019 FOR AREAS REQUIRING REINFORCEMENT.
  5. SURFACE OF DOOR WHERE EXIT DEVICE IS TO BE APPLIED MUST BE FLUSH.
  6. FOR GLASS BEADED DOORS, IF GLASS BEAD CAN NOT BE REMOVED, USE SHIM KIT 12-587.
  7. SEE TEMPLATES No. 4569 AND 4571 FOR ELECTROLYNX DETAILS WHEN NEEDED.
  8. FOR PRK TRIM SEE TEMPLATE 4051, FOR ET TRIM SEE TEMPLATE 4277

**SARGENT** Manufacturing Company  
100 Sargent Drive New Haven, CT 06511

DOOR MANUFACTURERS TEMPLATE: 12-8700	RELEASE DATE 31 JAN 06
SURFACE VERTICAL ROD EXIT DEVICE	TEMPLATE NO. 4297 H

INTERPRET DRAWING PER ANSI Y14.5M-1994		DRAWN BY/DATE <i>JRW</i> 1/23/06		<b>SARGENT</b> SARGENT Manufacturing Company 100 Sargent Drive New Haven, CT 06511	
UNLESS OTHERWISE SPECIFIED ALL DIMENSION ARE IN INCHES.		CHECKED BY/DATE <i>L.M.</i> 01-31-06		ART. EXIT DEVICE TEMPLATES	
TOLERANCE	.XX ±.01	MFG ENG/DATE		TITLE: DOOR MANUFACTURERS TEMPLATE: 12-8700	
ANGLE	±1°	FNL APPROVAL/DATE <i>Ces</i> 1/30/06		SURFACE VERTICAL ROD EXIT DEVICE	
FRACTION	±1/64	FNL APPROVAL/DATE		SIZE DWG No. 4297	
CONFIDENTIAL		PROD CTRL/FNL REL <i>bs</i> 1/31/06		SHEET: 1 of 1	

Form Rev. 28-01-2005