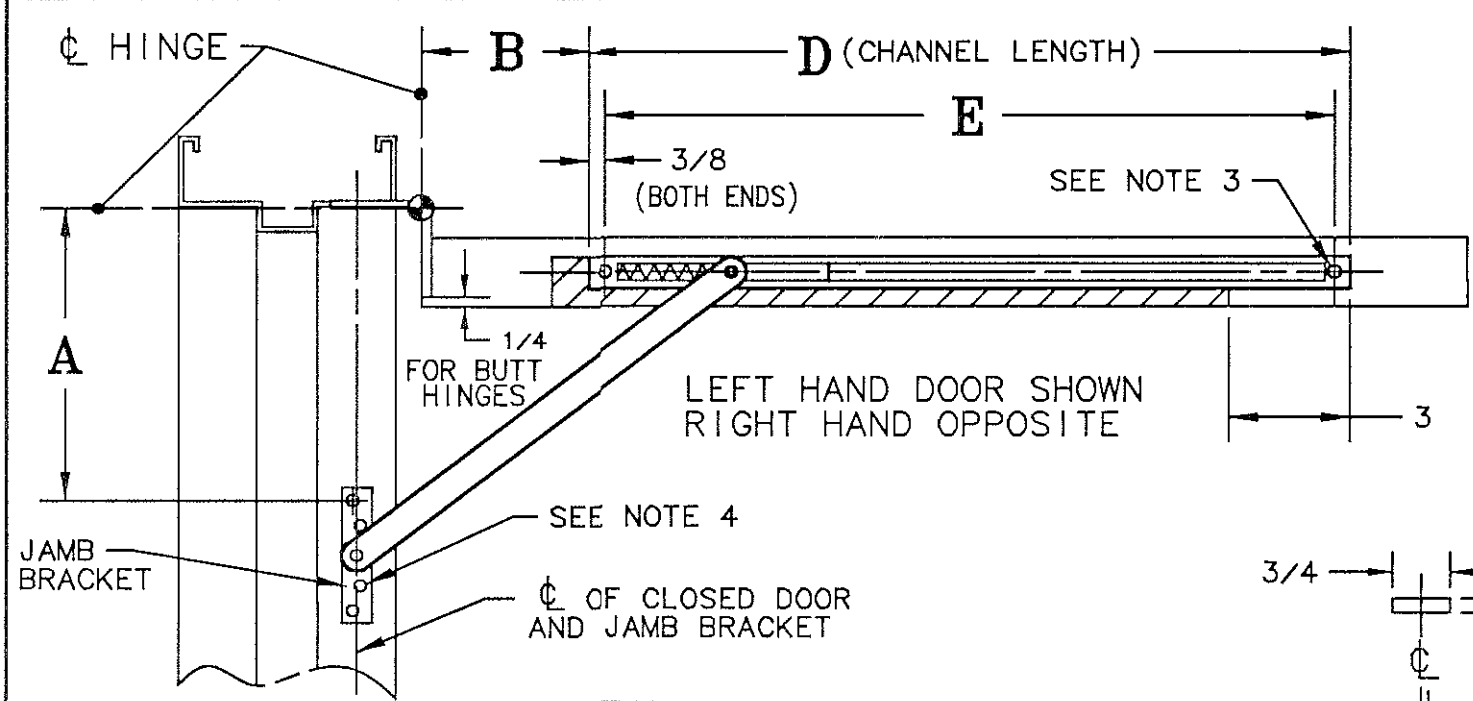
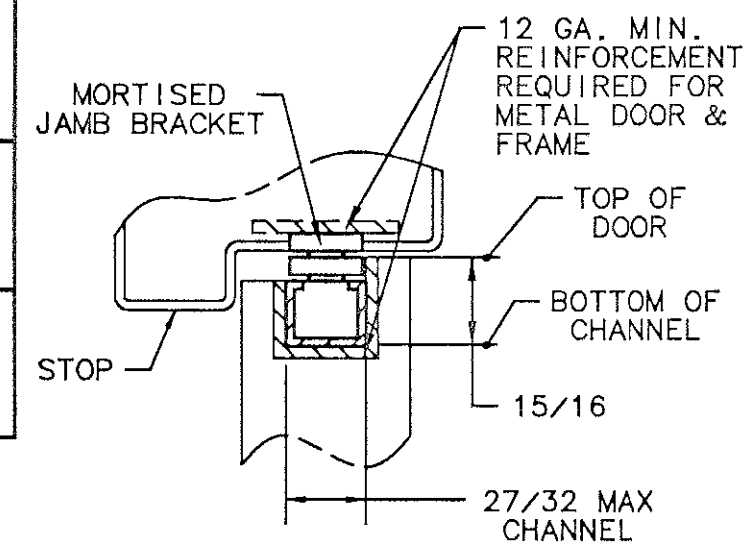
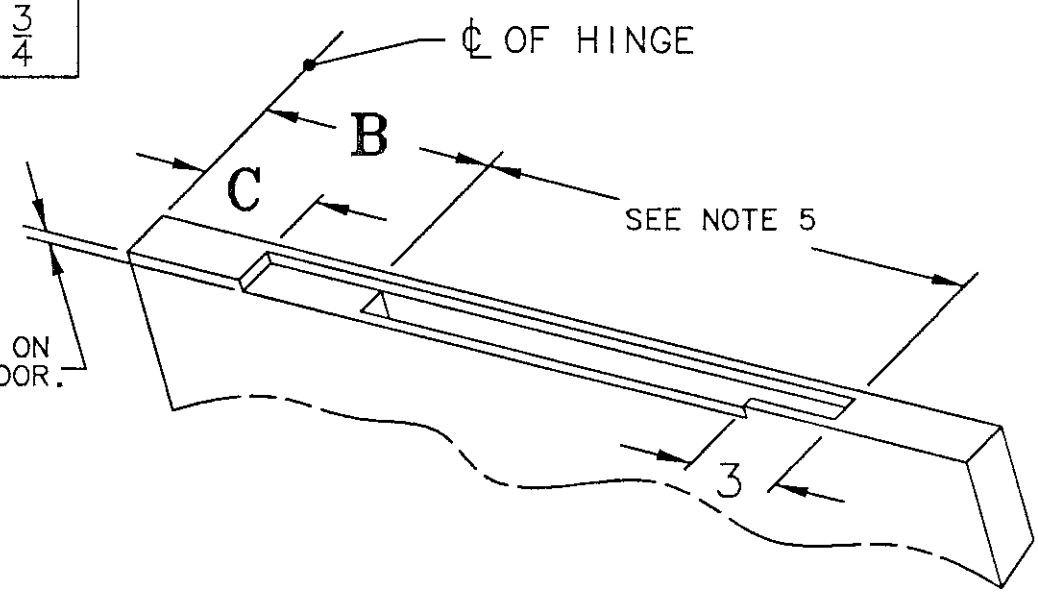


MODEL NO.	ACTUAL DOOR WIDTH	DEGREE OF OPENING AT HOLD OPEN OR STOP (FOR DEAD STOP SEE NOTE 1)																	
		85°			90°			95°			100°			105°			110°		
		A	B	C	A	B	C	A	B	C	A	B	C	A	B	C	A	B	C
1536	19 - 25	4 ⁵ / ₈	3 ¹ / ₄	2 ³ / ₄	4 ³ / ₈	3 ¹ / ₈	2 ¹ / ₄	3 ⁷ / ₈	3	1 ¹ / ₄	3 ⁵ / ₈	2 ³ / ₄	0 [⊙]	3 ¹ / ₄	2 ⁵ / ₈	0 [⊙]	3	2 ¹ / ₂	0 [⊙]
1537	25 ¹ / ₈ - 32 ¹ / ₂	6 ³ / ₈	6 ¹ / ₂	6 ¹ / ₄	6	6 ¹ / ₈	5 ¹ / ₂	5 ⁵ / ₈	5 ³ / ₄	4 ¹ / ₂	5 ³ / ₈	5 ³ / ₈	3 ³ / ₄	5 ¹ / ₈	5 ¹ / ₈	2 ¹ / ₂	4 ⁷ / ₈	4 ⁷ / ₈	1 ¹ / ₂
1538	32 ⁵ / ₈ - 40	8 ³ / ₄	9 ³ / ₈	8 ³ / ₄	8 ¹ / ₄	8 ⁷ / ₈	8 ¹ / ₄	7 ⁵ / ₈	8 ¹ / ₂	7 ⁵ / ₈	7 ¹ / ₂	8	7	7 ¹ / ₈	7 ⁵ / ₈	6	6 ⁷ / ₈	7 ¹ / ₄	5
1539	40 ¹ / ₈ - 48	10 ⁷ / ₈	14 ¹ / ₈	10 ⁷ / ₈	10 ¹ / ₄	13 ¹ / ₂	10 ¹ / ₄	9 ³ / ₄	12 ⁷ / ₈	9 ³ / ₄	9 ¹ / ₄	12 ³ / ₈	9 ¹ / ₄	8 ³ / ₄	12	8 ³ / ₄	8 ³ / ₈	11 ⁵ / ₈	8 ³ / ₈

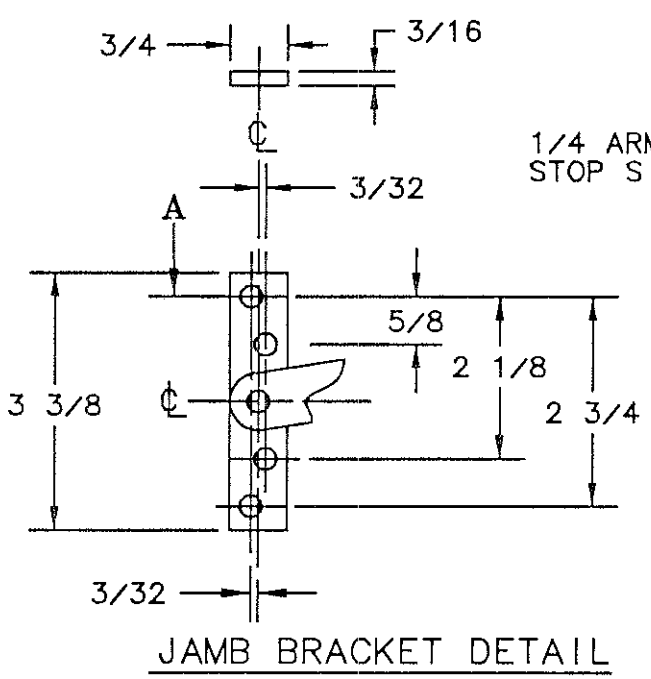
1530 MOUNTING GROUP 2		
HINGE TYPE	BUTT WIDTH OR OFFSET	DOOR THICKNESS
BUTT	5	1 ³ / ₄ - 2
OFFSET PIVOT	³ / ₄	2 - 2 ¹ / ₄



MODEL NO.	D	E
1536	15	14 ¹ / ₄
1537	17 ¹ / ₈	16 ³ / ₈
1538	20 ¹ / ₄	19 ¹ / ₂
1539	22 ¹ / ₂	21 ³ / ₄



- NOTES
- DEAD STOP OCCURS AT APPROX. 10° BEYOND HOLD OPEN POSITION. FOR DEAD STOP MOUNTING AT LISTED DEGREE OF OPENING ADD 1/4 TO DIM. A & B.
 - WHERE INDICATED THE ARM CUT-OUT MUST BE EXTENDED TO END OF DOOR.
 - USE (2) #12-24 X 1 FLAT HEAD MACHINE SCREWS OR #12 X 2" WOOD SCREWS.
 - USE #12-24 X 1/2 FLAT HEAD MACHINE SCREWS OR #12 FLAT HEAD WOOD SCREWS. 4 REQUIRED FOR JAMB BRACKET.
 - PROVIDE 1/16 OF CLEARANCE ON EACH END OF CHANNEL.
 - FOR CONTINUOUS HINGES, USE SIMILAR BUTT HINGE VALUES



SARGENT® Manufacturing Company
100 Sargent Drive New Haven, CT 06511

DATA SHEET:
1536-1539 SERIES
HOLDERS AND STOPS
- MOUNTING GROUP 2 -

EFFECTIVE DATE
MAY 03

TEMPLATE NO.
A7486 D