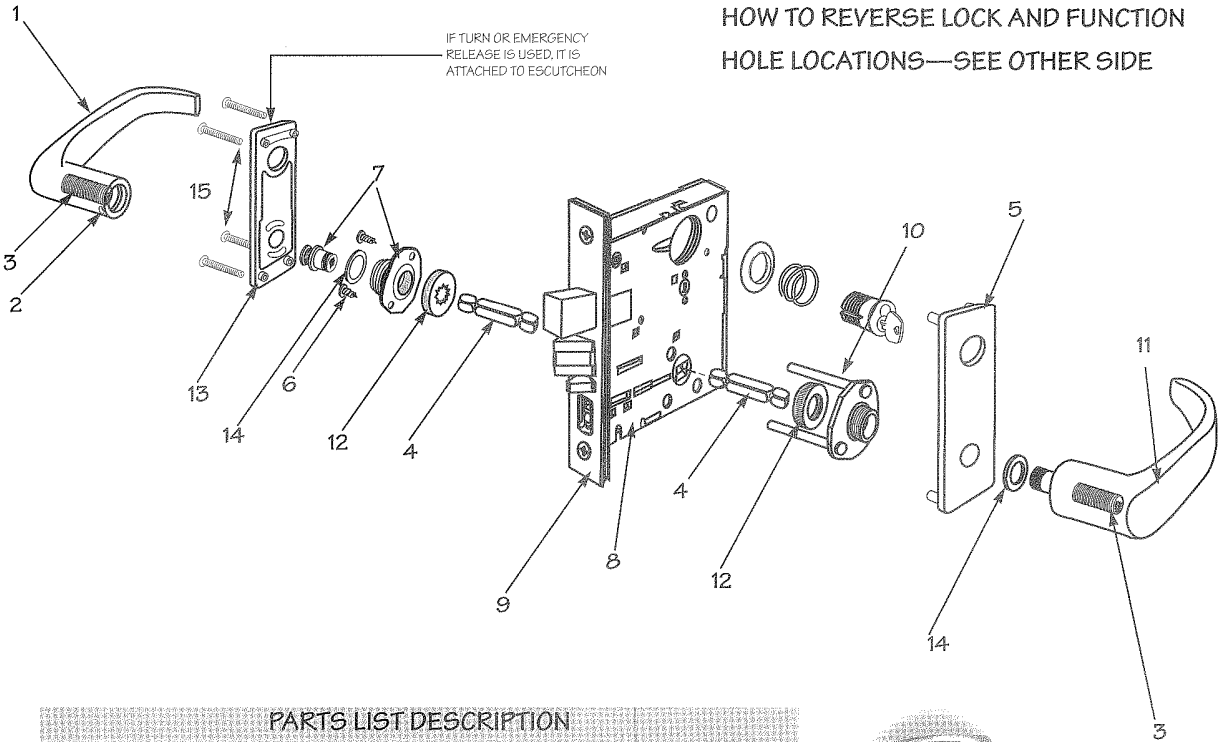


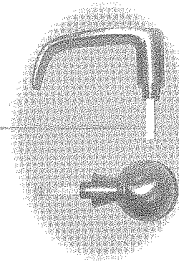
INSTRUCTIONS FOR INSTALLING SARGENT 9200 LEVER WITH SECURITY ESCUTCHEON TRIM LS 9100 KNOB WITH SECURITY ESCUTCHEON TRIM KS

HOW TO REVERSE LOCK AND FUNCTION
HOLE LOCATIONS—SEE OTHER SIDE



PARTS LIST DESCRIPTION

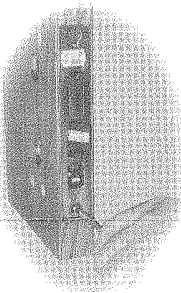
- | | |
|-----------------------------|-----------------------------|
| 1. Inside Lever | 9. Outside Front |
| 2. Setscrew | 10. Mounting Posts |
| 3. Spring | 11. Outside Lever |
| 4. Spindle | 12. Retaining Nuts |
| 5. Outside Escutcheon Plate | 13. Inside Escutcheon Plate |
| 6. Screw (2) | 14. Washer |
| 7. Adapter & Plate Assy. | 15. Thru Bolts |
| 8. Lockbody Unit | |



IF KNOBS ARE
USED INSTEAD OF
LEVER HANDLES,
INSTALLATION IS
THE SAME

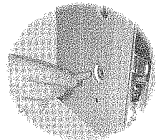
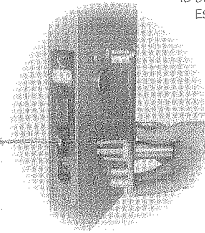
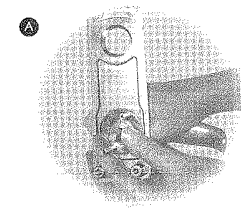
1 INSTALL LOCKBODY

- INSERT LOCKBODY INTO MORTISE CUTOUT HOLE LOOSELY IN PLACE WITH (2) LOCKBODY SCREWS. DO NOT TIGHTEN SCREWS AT THIS TIME.
- AFTER CYLINDER IS MOUNTED UNDER ESCUTCHEON, TIGHTEN CYLINDER CLAMP.



2 INSTALL OUTSIDE LEVER ASSEMBLY

- INSERT SPINDLE INTO OUTSIDE LEVER ASSEMBLY.
- WITH OUTSIDE LEVER HORIZONTAL, CAREFULLY INSERT THE MOUNTING POSTS THROUGH THE DOOR AND LOCKBODY. MAKE SURE THE SPINDLE IS PROPERLY ENGAGED IN THE LOCK CYLINDER IS UNDER ESCUTCHEON.
- INSERT SPINDLE INTO SQUARE HOLE ON INSIDE OF DOOR.
- SECURE THE ADAPTER AND PLATE ASSEMBLY TO THE INSIDE OF THE DOOR. THREAD THE SCREWS WITH THE LOCK WASHERS INTO THE MOUNTING POSTS OF THE OUTSIDE LEVER ASSEMBLY.

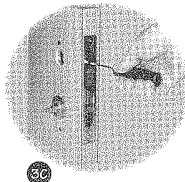


3 INSTALL CYLINDER

IF CYLINDER IS NOT INCLUDED IN THIS FUNCTION, PROCEED TO STEP 3E.

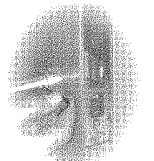
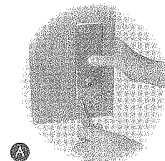
- SCREW CYLINDER ALONG WITH CYLINDER SPRING AND COLLAR INTO LOCKBODY UNIT.
- AFTER CYLINDER IS SCREWED INTO THE LOCK BODY UNIT, FLUSH WITH THE CYLINDER COLLAR, MAKE CERTAIN THE CYLINDER RETAINER IS LINED UP WITH THE NOTCH ON THE CYLINDER, AND THE KEYWAY IS VERTICAL.
- TIGHTEN THE CYLINDER RETAINER TO PREVENT UNSCREWING OF THE CYLINDER.
- TURN THE KEY IN THE CYLINDER TO MAKE CERTAIN THAT THE LOCKING OR LATCHING MECHANISM FUNCTIONS CORRECTLY.

- TIGHTEN THE LOCKBODY SCREWS.
- SECURE THE OUTSIDE FRONT PLATE TO THE LOCKBODY.



4 INSTALL INSIDE LEVER

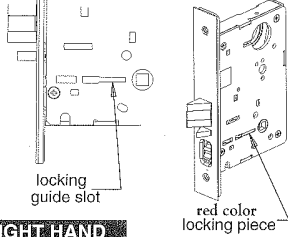
- FIRMLY TIGHTEN TWO SCREWS ON THE INSIDE ADAPTER AND PLATE ASSEMBLY.
- TIGHTLY SCREW THE ESCUTCHEON TO THE OUTSIDE ESCUTCHEON USING SPANNER THRU BOLTS PROVIDED.
- PLACE INSIDE LEVER HORIZONTALLY ONTO SPINDLE. TIGHTEN SET SCREW SECURELY WITH SIX LOBE SECURITY SCREW DRIVER.



HOW TO REVERSE LOCK

If It Is Necessary To Change Hand of Locking Piece

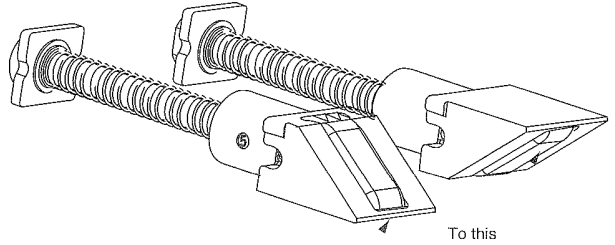
1. Turn lockbody to side NOT marked with RED locking piece.
2. Insert blade screwdriver into locking piece slot.
3. Push locking piece toward front of lockbody and rotate until RED shows.
4. RED indicates locked (outside) side!



RIGHT HAND SHOWN

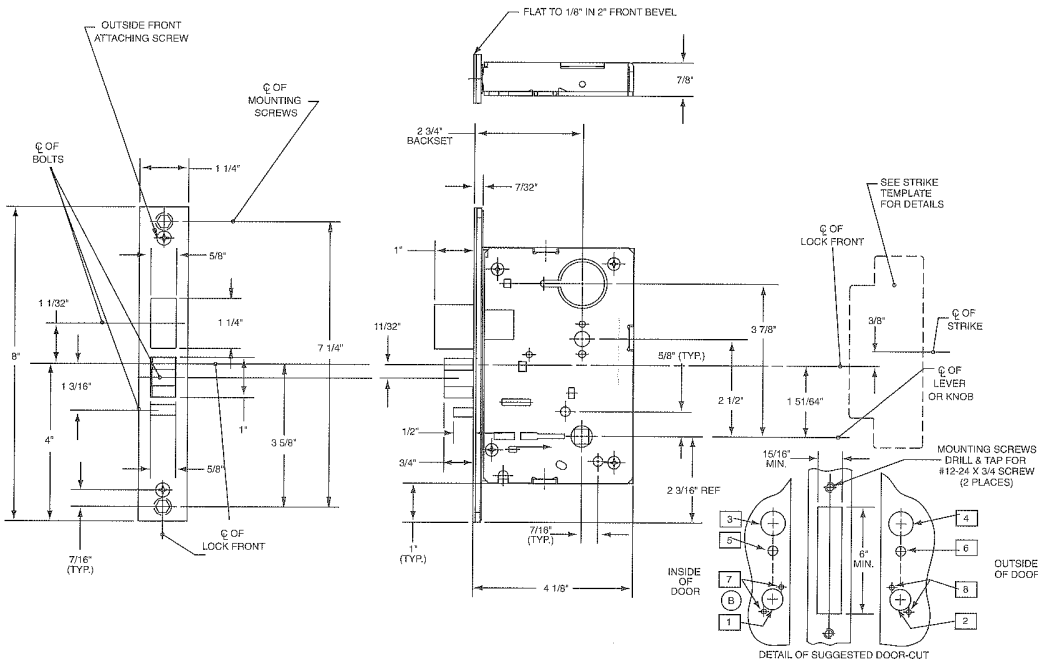
If It Is Necessary To Change Hand of the Latchbolt:

1. Remove cap from lock
2. Reverse or turn latchbolt



9100/9200 TEMPLATE

THIS TEMPLATE COVERS THE 9100 & 9200 SERIES LOCKSETS IN ACCORDANCE WITH THE SPECIFICATIONS INDICATED BELOW.



FUNCTION	REQUIRED HOLES							
	1	2	3	4	5	6	7	8
03								
04								
05								
15								
16								
20								
21								
22								
23								
24								
25								
26								
37								
65								

- 4 DIMENSIONS SHOWN ARE MAXIMUM PART DIMENSIONS
- 3 SUITABLE REINFORCEMENTS REQUIRED FOR METAL DOORS
- 2 REFER TO TRIM TEMPLATE FOR ADDITIONAL HOLE REQUIREMENTS
- 1 DENOTES HOLES REQUIRED FOR FUNCTION LISTED. (CHECK BEFORE CUTTING HOLES)

SARGENT
ASSAULT

NEW HAVEN, CT 06511

TEMPLATE: MORTISE LOCK FOR 9100 AND 9200 SERIES (LOCKBODIES ONLY)

RELEASE DATE:

TEMPLATE NO. 7150A